

• : Name  
: Occupation  
: Address



# SECURITY SOLUTIONS PORTFOLIO

Supporting our clients worldwide

# WE ARE DEDICATED TO THE SECURITY OF YOUR BUSINESS

Our ethos is simple; provide customers with the very best security solutions, maintained and installed by our skilled nationwide Field Teams.

Cennox is known worldwide for our approach to security and the innovative solutions we develop.



## Cash Security

We support retail and financial organizations to protect their cash assets and additional products to protect the devices customers engage with.

## Electronic and Physical Security

We support customers with a host of solutions to secure their facilities and deliver ongoing support. We keep properties safe, secure and maintained.

## Product Security

Our security solutions are used worldwide by customers and law enforcement for supporting assets in transit, warehouses or retail.

## Travel Security

Our skilled, accredited and TSA approved teams undertake a number of specific services and solutions focused on supporting national borders and travel terminals.



## Cash Security

- >> ATM Security
- >> CIT Solutions
- >> Safes Solutions

## Electronic and Physical Security

- Alarm Surveys and Installation <<
- Access and Entry Systems <<
- CCTV Surveys and Installation <<
- Enterprise Video Management <<
- Bullet Resistant Security Barriers <<



## Product Security\*

- >> Covert Asset Tracking
- >> Tobacco Tracking
- >> Phone Tracking
- >> Jewelry Tracking
- >> Pharmaceutical Tracking

## Travel Security

- Luggage Scanner Installation <<
- Body Scanner Installation <<
- Airport Security Design and Consultation <<
- Gas Pump Security <<



\*Please check for region availability.



## CASH SECURITY

Solutions designed to detect and protect



## CASH SECURITY

Our Cash Security solutions protect banks, retail and hospitality sectors in the safe movement and access to cash, as well as the devices which stores or receives them.

## ATM SECURITY

Multiple industry leading ATM Security solutions to counter the numerous threats the financial community face.



## CIT SOLUTIONS

Providing the leading CIT cases with the SQS Security Qube System, alongside our fully homologated IBNS cash cassettes, make Cennox the go-to CIT solutions provider.

# CASH SECURITY SOLUTIONS

Cennox develops and innovates cash security solutions for banks and retail customers worldwide. Our solutions address a wide spectrum of threats and deliver real-time success. Our cash security solutions include:

### >> ATM Security

- Anti-Skimming Protection
- ATM Tampering Detection
- ATM Alarms and Sensor
- ATM Rooms and Enclosures
- ATM Safe Protection
- ATM Plinths
- ATM Barriers
- ATM Tracking
- Gas Detection Solutions
- Security Smoke Devices
- Bank Note Staining

### >> CIT Solutions

- CIT Cases
- Homologated CIT Case and Ink Staining Solution

## Safes Solutions

Cennox can now offer Safe Solutions through the recent acquisition of FireKing Safety and Security. These include:

- >> Cash Management Safes
- >> Commercial Safes

For more information visit [www.cennoxsafes.com](http://www.cennoxsafes.com)



6

## ATM SECURITY

Full portfolio of ATM focused solutions



# ANTI-SKIMMING PROTECTION

Threat detection and prevention solutions



## SKIMMING DETECTION AND PREVENTION

### KEY FEATURES

- Provides proactive threat detection to counter fraud and customer data theft for both motorized and dip card readers
- Remote enhanced fault reporting
- Detects fascia tampering, 'Lebanese Loops', card traps and drilling devices
- Notifies the customer of the attack
- RTC and data/event storage option
- Upgradable in the field at a fraction of the cost of replacing the entire unit



## INSERT SKIMMING PREVENTION

### KEY FEATURES

- Immediate protection against deep insert skimmers
- Quick and simple installation
- Requires no power or connectivity to the ATM network
- Multiple designs to reflect the model type
- Low cost security solution

//

The products Cennox develops are frequently created in partnership with the financial community, which enhances our reputation and increases our success rate at halting each new style of attack.

# ATM TAMPERING DETECTION

Passive and intelligent protection



## JACKPOTTING AND BLACK BOX PROTECTION

### KEY FEATURES

- Protection against holes being drilled into the ATM by criminals in order to attach equipment which can automatically dispense all the cash held within
- A reinforced steel plate slows / stops the drilling
- A sensor detects the drilling and sets off the alarm
- Options to deploy additional devices - ink/glue are available

## CASH SHUTTER GUARD

### KEY FEATURES

- Protection against shutter related fraud such as cash traps and Transaction Reversal Fraud (TRF)
- Restricted aperture denies vandals access to the cash shutter
- Angled cash presenter makes it more difficult to fit cash traps
- Manufactured from a billet of aircraft grade aluminum
- Low cost and easy to install



# ATM ALARMS AND SENSOR

Immediate deterrents to ATM theft and destruction



## ATM AUDIBLE STROBE ALARM

### KEY FEATURES

- Generates immediate attention with the internal and external alarm features of the loud siren and strobe light
- Universal to any ATM and integrates into ATM power supply with battery backup
- Vibration/pulse sensor independent to ATM tilt sensor
- Independently connected internal security system
- Customizable to meet customer requirements
- Compact and easy to install



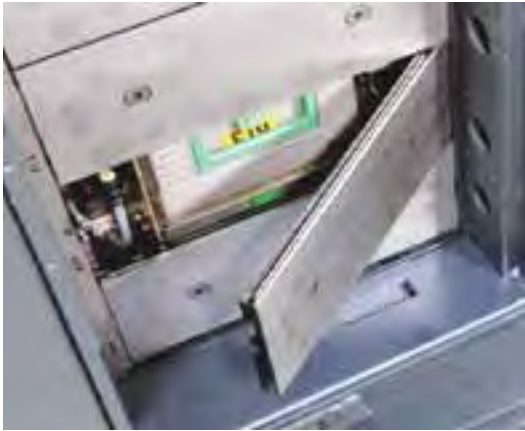
## ATM MULTI-SENSOR UNIT

### KEY FEATURES

- Detection system for ATMs against pull out (tilting), drilling, grinding, cutting, hammering, and explosive gas
- All-in-one device
- As standalone (to be connected to non-ink staining products or third party security products via dry contacts)
- Can be part of an ink staining solution (to be connected to GCU via CAN)
- Easy installation
- No configuration plug-and-protect

# ATM SAFE PROTECTION

Internal physical defense system



## THE INTERNAL SAFE SYSTEM

### KEY FEATURES

The Internal Safe System is the only physical defense system designed to offer a powerful response to the full range of criminal attack methods deployed against the ATM estate. Including:

- Armed robbery and duress against cash-in-transit replenishment teams
- Brute force
- Burglary
- Ram-raid
- Explosive gas



# ATM PLINTHS

Physical base plate protection



## THE SECURITY PLINTH

### KEY FEATURES

- The Security Plinth was developed to provide a secure anchorage solution directly under the ATM
- Manufactured specifically to each site with the aim of positioning the ATM at the required DDA height
- Height is fixed once manufactured
- The Security Plinth has been developed for:
  - External TTW ATM / Low level height (40mm)
  - Standard ATD Height (85mm to 454mm)
  - Internal / Lobby ATM / Low level height (40mm)

## THE UNIVERSAL SECURITY PLINTH

### KEY FEATURES

- Supplied with center line and wall orientation etched into top plate for simple installation
- Adjustable at four corners to allow fine adjustment
- Top plate ready drilled and tapped with safe bolt holes
- Easy access to side and top for spanner and socket bolt tightening
- Supplied with cut-outs and power/data entry points in top plate to avoid cable entrapment
- Multiple ground fixing locations in base plate (only four fixings needed)
- Optional cosmetic cladding kit available

## THE UNIVERSAL BASE PLATE

### KEY FEATURES

- Secures a free-standing ATM to prevent pull-outs
- An attachment plate aligns with attachment points on all types of ATMs
- Plate is embedded in to a concrete platform and the ATM is bolted down on top
- ATM is virtually impossible to remove even using heavy plant machinery

# ATM BARRIERS

Ultimate physical protection



12

## THE ATM BARRIER SYSTEM

### KEY FEATURES

- Adaptable installation on existing bollards
- Upgrades and add-ons available
- Robust steel construction
- One-of-a-kind unique security lock enclosure
- Commercially welded parts
- Custom colors / branding available
- Additional options
  - Two lock options available
  - Additional option to add audible alarm configuration and strobe light



“ The ATM Audible Strobe Alarm can be used alongside the ATM Security Barrier to provide an additional layer of protection.

# ATM TRACKING

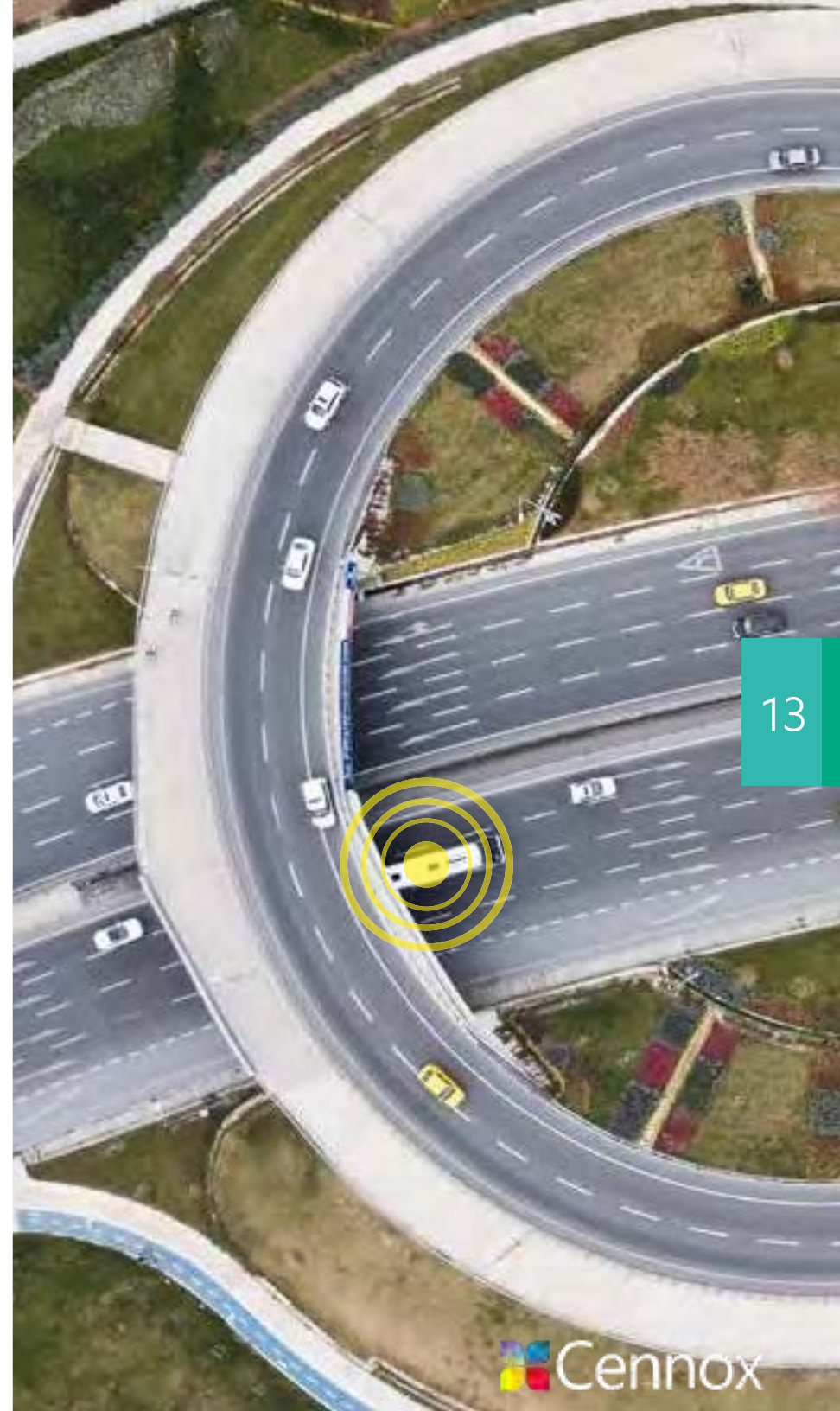
Rapid repatriation of stolen devices



## THE ATM TRACKING SYSTEM

### KEY FEATURES

- Automatically initializes when the ATM is tilted or moved and police and dispatch officers are alerted of the attack
- Exact position of the ATM containing the tracker can be tracked online
- Discrete and invisible
- Easily installed in all types of ATMs
- Remote access possible to reset system
- Customers may benefit from reduced insurance premiums



# GAS DETECTION SOLUTIONS

Immediate threat detection



## THE GAS DETECTION SYSTEM

### KEY FEATURES

- Gas detection and neutralization
- Once the critical gas level has been reached our device will neutralize the injected gas based on the amount of explosive gas entered
- Avoids explosions that might bring damage to surrounding property and people
- Fully autonomous functioning
- Safe and easy to use
- Installed on-site on live systems with limited downtime
- Our solution is completely integrated in the ATM

// Our in-house Research and Development Teams are vested in the creation of some of the most innovative and dependable security solutions helping to fight bank fraud to date.

# SECURITY SMOKE SOLUTIONS

Immediate impact



## SAFE PROTECTED INK AND SMOKE SOLUTION

### KEY FEATURES

- Releases a thick cloud of smoke that creates a deterrent and stains the safe's content
- Available in different versions taking into account the safe's form factor including floor safes
- Reduction of risks due to a variety of attack types (hammering, tilting, drilling, temperature detection)
- User friendly
- Adds additional protection to your entire safe whatever type of safe
- Energy friendly by using a sleep mode

# BANK NOTE STAINING

Ultimate staining technology



## THE 'LITE' INK STAINING SOLUTION

### KEY FEATURES

- Stains the notes in the machine in the event of extraction, burglary, opening by force or theft of the cassettes
- Fully integrated into the ATM and goes unnoticed by both customers and criminals
- Fully automatic and autonomous operation
- Can be used with all types of cassettes
- Approved on all regulated markets
- To reinforce the dissuasive effect, it is possible to add a DNA ink marker
- Ink Staining Lite was developed to meet regulatory requirements in France: 100%/20%/360°

## THE 'COMPLETE' INK STAINING SOLUTION

### KEY FEATURES

- Detects an attack and indelibly stains the cash stored in the cassette making the cash worthless for the robber
- Armed and disarmed with a simple key switch, remote control or by a third-party interface
- Automatically switches to a mode which guarantees the highest security level

## DROP SAFE INK STAINING SOLUTION

### KEY FEATURES

- Stains the contents of the drop safe with indelible ink
- Protection against hammering, tilting, drilling and temperature changes
- Functions fully automatically so no intervention by personnel is required even if an attack occurs
- Compact with a minimum capacity loss
- Customers may benefit from reduced insurance premiums
- Easy to install and use
- Energy friendly by using a sleeping mode





## GLUE AND INK STAINING SOLUTION

### KEY FEATURES

- Provides 100% note staining and 15% - 20% of each note is covered
- Glue fuses notes together as a solid block
- Notes are rendered completely worthless to the criminal but can be repatriated by Central Bank
- Additional DNA Taggant can be introduced
- Virtually impossible to separate the notes once fused together
- Criminals already know - remove the prize, remove the crime





18

## CIT SOLUTIONS

Fully homologated security solutions

# CIT CASES

Ultimate cross pavement security



MINI CIT CASES

## KEY FEATURES

- Capacity for up to 5,000 unused banknotes
- Ultra-lightweight - empty weight of 6.1 kg
- Market leading BW/CW ratio 0.82
- High speed banknote neutralization system
- Logs all handling events
- Superior and irreversible staining process within milliseconds
- Equipped with the unique patented electronic shield
- Multiple sensors to detect intrusion attempt



MAXI CIT CASES

## KEY FEATURES

- Capacity for up to 8,000 unused banknotes or one ATM cassette
- Lightweight - empty weight of 7.8 kg
- Market leading BW/CW ratio 1.03
- High speed banknote neutralization system
- Logs all handling events
- Superior and irreversible staining process within milliseconds
- Equipped with the unique patented electronic shield
- Multiple sensors to detect intrusion attempt



COLLECTOR MAXI CASES

## KEY FEATURES

- Capacity for up to 8,000 unused banknotes or 5,000 banknotes in multiple plastic seal bags
- Lightweight - empty weight of 9.2 kg
- Market leading BW/CW ratio 0.87 resp. 0.54
- High speed banknote neutralization system
- Logs all handling events
- Superior and irreversible staining process within milliseconds
- Equipped with the unique patented electronic shield
- Multiple sensors to detect intrusion attempt

# Homologated CIT Case and Ink Staining Solution

Ultimate partnership in staining technology



## CIT CASES AND THE 'COMPLETE' INK STAINING SOLUTION

### KEY FEATURES

When the IBNS cassettes are combined with the CIT cases it forms a fully homologated, end-to-end security solution for cash transportation and ATM replenishments.

This intelligent, multipurpose and extremely lightweight system makes it today's most advanced solution for bulk cash and ATM cassettes.



//

There is more than one type of ATM crime testing the industry, that is why Cennox has developed more than one kind of ATM specific security product. Our CIT offering cements our position as being able to offer the most robust and truly end-to-end security protection.



22

## ELECTRONIC AND PHYSICAL SECURITY

Solutions designed to detect and protect





## ALARM SOLUTIONS

Trusted alarm solutions designed to provide our customers with industry leading service from installation to ongoing maintenance.

## ACCESS AND ENTRY SYSTEMS

Installing the right entry systems to leave your facilities secure and protected.



## CCTV SOLUTIONS

Comprehensive CCTV solutions to ensure your facilities remain monitored and security equipment maintained.

## ENTERPRISE VIDEO

With EVMS-networked video solutions, security personnel can capture and analyze video images according to specific criteria.



## BULLET RESISTANT BARRIERS

Providing the highest quality, strong security with special fabrication and bevelling techniques.



# ELECTRONIC AND PHYSICAL SECURITY SOLUTIONS

Cennox is passionate about securing our customers' facilities and infrastructure. From physical solutions to digital CCTV and access control systems, all are installed and maintained by a nationwide field force.

- >> Alarm Solutions
- >> Access and Entry Systems
- >> CCTV Solutions
- >> Enterprise Video Management
- >> Bullet Resistant Barriers



# ALARM AND ACCESS CONTROL SOLUTIONS

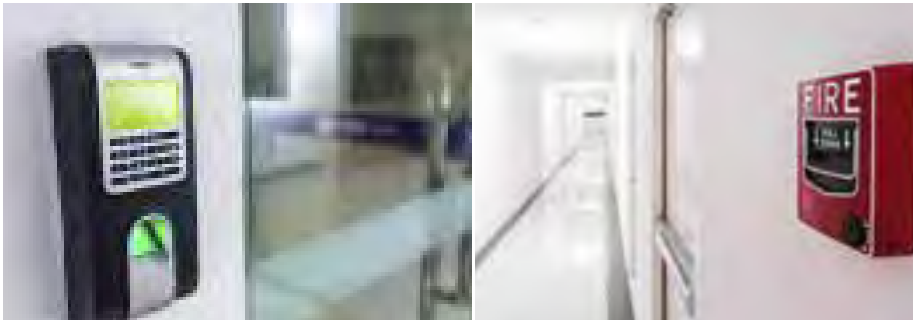
Surveys, Installation and Maintenance

24



# ALARM AND ACCESS CONTROL SOLUTIONS

Ensuring your protective solutions are well maintained



## ALARM AND ACCESS CONTROL SOLUTIONS

### KEY FEATURES

- Installations
- Inspections
- Service and preventative maintenance
- Security intrusion alarms
- Fire alarms
- Access control systems
- Third-party verification of alarm signals
- Special projects
- Site surveys
- Call center services

“ When a system fails, it may go unnoticed until a disruption occurs, often resulting in loss of property or even loss of life. Regular maintenance is your best protection against such occurrences.



26

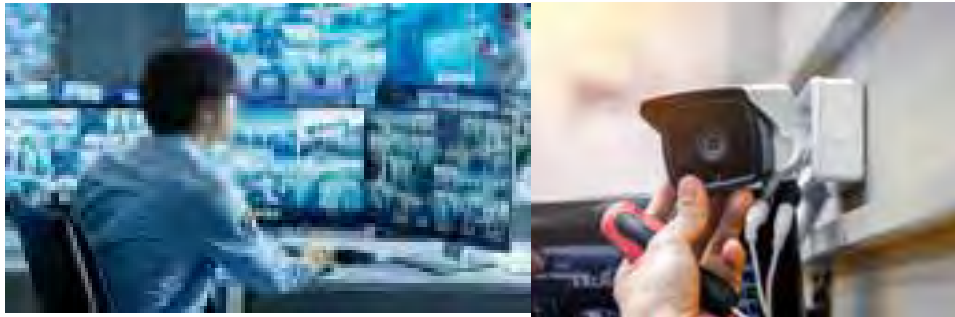
## CCTV SOLUTION

Comprehensive monitoring solutions



# CCTV SOLUTIONS

The eyes and ears of your security umbrella



## CCTV SOLUTIONS

### KEY FEATURES

- State-of-the-art technology
- Highest quality images available
- CCD video cameras with SVHS analogue recorders
- Digital archiving systems
- Survey and compliance services
- CCTV installation services
- Service and preventative maintenance





# ENTERPRISE VIDEO SOLUTIONS

Intelligent security video solutions

# ENTERPRISE VIDEO SOLUTIONS

Delivering an intelligent security solution



## ENTERPRISE VIDEO MANAGEMENT SYSTEMS

### KEY FEATURES

- Advanced security systems available
- Best price points available
- Sophisticated IT solutions to video surveillance and security applied
- Intelligent video surveillance, forensic analysis and incident management tools available.
- Designed for large-scale implementation in vertical markets
- Protect assets
- Ensure patron safety
- Promote staff accountability





30

# BULLET RESISTANT BARRIERS

Installation and Repair Services



# BULLET RESISTANT BARRIERS

Physical protection and ultimate security



## BULLET RESISTANT BARRIERS

### KEY FEATURES

- High crime deterrent
- Reduction of cash loss
- Reduction in property damage
- Increased employee and customer safety
- Increased employee production
- Increased customer loyalty and appreciation
- Fast operations recovery time

// Our solutions protect buildings and staff with the best products and supporting services.



32

## TRAVEL SECURITY

Trusted to deliver service critical security







## LUGGAGE SCANNERS

Trusted by international airports to complete the installation of their latest luggage scanning technology.



## FULL BODY SCANNERS

Helping airports install the latest body scanning technology, including all pre-installation logistics.



## GAS STATION SECURITY

Protecting customers at the gas pump ensures Cennox continues our ethos of protecting customers wherever they are.



# TRAVEL SECURITY

Cennox actively participates in the floor planning, programming and installation of airport dedicated hardware - including kiosks, payment terminals, and TSA-approved transportation security equipment, such as body and baggage scanners. Alongside this service is our ability to maintain and clean this sensitive security equipment.

- >> **Luggage Scanner Installation**
- >> **Full Body Scanner Installation**

As card skimming increases at the gas pump, Cennox has designed a five point card protection solution specifically to detect and protect against card fraud at the pump.

- >> **Gas Station Security**

# TRAVEL SECURITY

Solutions to protect those who travel

## LUGGAGE / PEOPLE SCANNER INSTALLATION

### KEY FEATURES

- Project management
- Stakeholder coordination and support
- Design consultation
- Site validations and analysis
- Site lead and consultation services
- Security equipment deployment and integration services
- New technology implementation and roll-out
- Automation and self-service technology integration
- Original Equipment Manufacturer (OEM) coordination
- Logistics and transportation services
- Storage solutions
- Installation services
- Acceptance testing
- Project close-out
- Access controls solutions
- CCTV systems and monitoring solutions
- Tenant improvement / construction
- General contracting services
- Electrical services





## GAS PUMP ANTI-SKIMMING

### KEY FEATURES

- Prevents criminals attaching skimmers to gas pumps
- Five separate security features
- Advanced cabinet locks
- Bullet Stud to prevent overlay skimmers
- Armored plate retrofitted inside the cabinet to shield the electronics within
- One-time code - second internal lock
- Signal jamming technology

// Trusted to deliver security solutions at national borders demonstrates how our clients rely on our ability to support them with their safety. From single product protection to international border security, Cennox remains the security heart beat across industries.



#### US HEADQUARTERS

Cennox  
4200 Highlands Pkwy SE, Suite A  
Symrna, GA  
30082

t: +1 (404) 605-0100  
us.sales@cennox.com

#### UK HEADQUARTERS

Cennox  
Admiralty Way  
Camberley  
Surrey  
GU15 3DT

t: +44 (0) 1276 607200  
uk.sales@cennox.com

#### EUROPEAN HEADQUARTERS

Cennox  
Radiatorenstraat 41  
B-1800 Vilvoorde  
Belgium

t: +32 2 713 62 00  
eu.sales@cennox.com

[www.cennox.com](http://www.cennox.com)